

# GATECH

---

## AUTOMATIC IDENTIFICATION SYSTEM

### **Product Catalog**

We offer  
gyms everything  
from the entrance  
to the locker rooms.

Speed gates

# HG 02

HG 02 is an inward-opening speed gate designed to provide fast and secure access control. It is perfectly suited for public buildings, office buildings, gyms, and commercial properties.

The gate's passage width is either 570mm or 900mm.



## Technical Specification

**Dimensions of the Frame (L x H x W):** 230 mm x 165 mm x 1050 mm

**Passage Width:** 570–900 mm

**Weight (Single Unit):** ~65 kg

**Weight (Center Unit):** ~80 kg

**Passageway Width:** ≤900 mm

**Operating Voltage:** 110/220V AC 50/60 Hz, 24V DC

**Power Consumption (Stand-by):** 4W / 8W for medium-sized unit

**Access Control Speed:** ~30 people/min (normal), up to 60 people/min in free passage mode

**Wing Opening Time:** ~0.8 seconds

**Operating Temperature:** -20 °C - +68 °C (optimal -50 °C with additional heater)

**Operating Humidity:** 0 ~ 95% (non-condensing)

**Working Environment:** Indoor

**In Emergency Situations:** The wings automatically retract into the gate in case of power failure (fail-safe mode).

**When Power is Lost:** The wings automatically open the passage using the battery.

## Features

✓ Usage Environment

✓ Special Safety Features

✓ Fast and Reliable Access

✓ Compatibility and Control

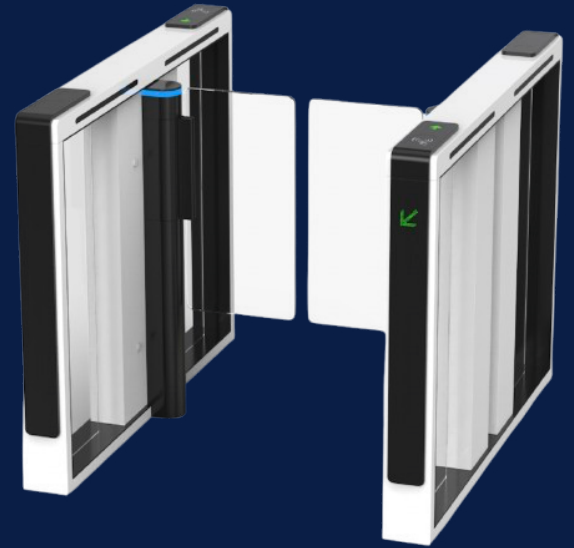
✓ Aesthetic Design

✓ RGB LED Lighting

Speed gates

# GT-70

The GT-70 Speed Gate is an ultra-fast and proven reliable turnstile designed to provide quick access control for high customer traffic. The GT-70 is an ideal choice for places like gyms, offices, and other indoor or outdoor environments where efficient and rapid access control is essential, preventing queues from forming in either direction.



## Technical Specification

**Frame Material:** Steel, white (or custom) and black paint  
**Wing Material:** Reinforced glass, Plexiglass (transparent)  
**Dimensions:** 1400 x 1300 x 978 mm  
**Weight:** 75 kg (single frame), 95 kg (double frame)  
**Passage Width:** 600 mm (standard), 1100 mm (expandable lane)  
**Wing Height:** 900 mm (standard), 1800 mm (optional)  
**Passage Direction:** Single-direction / Bi-directional  
**MCBF (Mean Cycle Between Failures):** 15 million  
**Power Supply:** AC 220V/110V, 50/60Hz  
**Operating Voltage:** 24V DC  
**Power Consumption:** 40W  
**Operating Temperature:** -20 °C - 75 °C  
**Operating Humidity:** 0 ~ 95% (non-condensing)  
**Environment:** Indoor / Outdoor (under rain protection)  
**Capacity:** 55 persons/min  
**LED Indicator:** Two LED lights at the top: green entry, red no entry  
**Infrared Sensors:** 7 pairs (standard)  
**Emergency:** Wing opens automatically when power is cut off  
**Communication:** Dry contact, relay signal, RS485  
**Compatibility:** Integrates with any access control system.



## Features

- ✓ Dual or Single Direction Operation
- ✓ Super Fast Opening
- ✓ Quiet and Smooth Operation
- ✓ Compatible with All Access Control Systems
- ✓ Expandable Passage Widths
- ✓ Clear LED Indicators
- ✓ Fire Safety
- ✓ Indoor Use Designed

## Tripods

# 700 E N1

The 700 E N1 is a proven reliable tripod gate, well-suited for both indoor and outdoor environments. This gate is specifically designed for high-traffic areas, where reliability and speed are crucial. It is important to note that in a gym environment, tripod gates may (but not necessarily) present challenges for users if they are carrying a suitcase or large gym bag.



## Features

**Installation Location:** Indoor and outdoor (recommended protection for outdoor use)

**Operating Temperature:** -20°C / +68°C (opt. -50°C with heater)

**Humidity:** 95% non-condensing

**Duty Cycle:** 100%, 24/7 operation

**Frame:** 304 stainless steel (316 option), satin finish (alternatively electrostatic powder coating)

**Wings:** Ø40x2 mm 304 stainless steel (316 option), individual removable parts

**LED Indicators:** RGB LED, indicating status (green = passage allowed, red = passage blocked)

**Voltage:** 110/220V AC 50/60 Hz (±10%), 24V DC

**Mechanical Capacity:** Max. 82 cycles/min, nominal ~30 people/min

**Access Control System:** Compatible with all access control systems.

**Emergency Situation:** The gate is compatible with fire alarm systems and will either rotate freely or the arm will drop if the gate has the drop-arm option.

**One-way or Two-way Passage**

## Technical Specification

**Dimensions (L x H x W):** 380 x 280 x 1000 mm

**Weight:** 35 kg

**Passage Width:** 550 mm (middle wing 500 mm)

**Flow Efficiency:**

**Mechanical Capacity:** Max. 82 cycles/min, nominal ~30 people/min

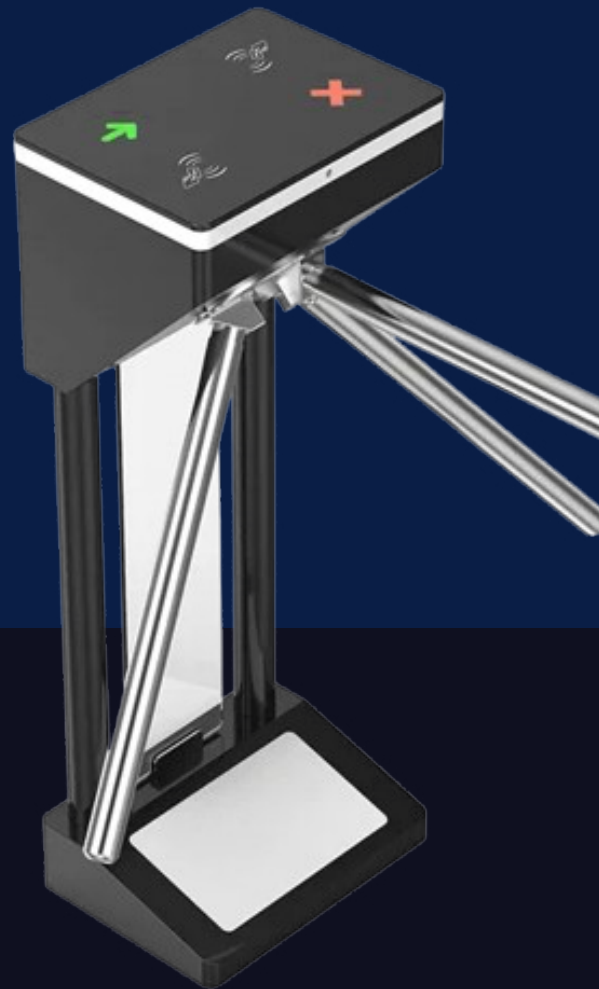


## Tripods

# GT-50

The GT-50 tripod gate offers long-lasting performance and reliability, making it an ideal choice for environments that require efficient and secure access control. This gate operates smoothly, generating minimal noise and no mechanical impact, ensuring a seamless user experience while maintaining high security standards.

The gate features a drop-arm mechanism, which allows the arms to automatically drop when a fire alarm or emergency is triggered, meeting fire safety requirements.



## Technical Specification

**Frame material:** Steel + white and black paint

**Card panel material:** Tempered glass

**Wing material:** 304 stainless steel

**Dimensions:** 380 \* 280 \* 1000 mm

**Weight:** 35 kg/piece

**Passage width:** 550 mm (wing length: 500 mm)

**Passage direction:** One-way / Two-way

**MCBF (mean cycles before failure):** 10 million

**Power supply:** AC 220V/110V, 50/60Hz

**Operating voltage:** 24V DC

**Power consumption:** 20W

**Operating temperature:** -20 °C - 75 °C

**Operating humidity:** 0 ~ 95% (non-condensing)

**Operating environment:** Indoor / Outdoor

**Flow efficiency:** 35 persons/min

**LED indicator:** Unique blue LED strip (front panel + top + sides)

**Emergency:** Wings drop automatically when power is cut

**Communication:** Dry contact, relay signal, RS485

## Features

✓ One-way or two-way access

✓ One person at a time

✓ LED indicators

✓ Automatic reset function

✓ Easy to install and maintain

✓ 2-year warranty

Swing gates

# GT-01

GT-01 is a swing gate suitable for both indoor and outdoor environments. The GT-01 swing gate is an excellent solution for temporarily opening a passageway or allowing a larger group or goods delivery to pass through.

## Technical Specification

**Dimensions (L x H x D):** 230 mm x 165 mm x 1050 mm

**Weight:** 25 kg / unit

**Passage width:** ≤900 mm (one passage step)

**Flow efficiency:** ~40 people / minute

**Traffic control:**

Unidirectional / Bidirectional passage

Power consumption: 40 W

**Power supply:** AC220V/110V, 50/60 Hz

**Operating voltage:** 24V DC

**Operating temperature:** -20 °C - 75 °C

**Operating humidity:** 0 ~ 95 % (non-freezing)

**Operating environment:** Indoor and outdoor

**LED indicator:** Yes

**Infrared sensor:** 2 pairs (optional, upwards or downwards)

**Emergency situation:** Gate automatically opens in the event of power failure

**Communication:** Dry contact, Relay signal, RS485

## Features

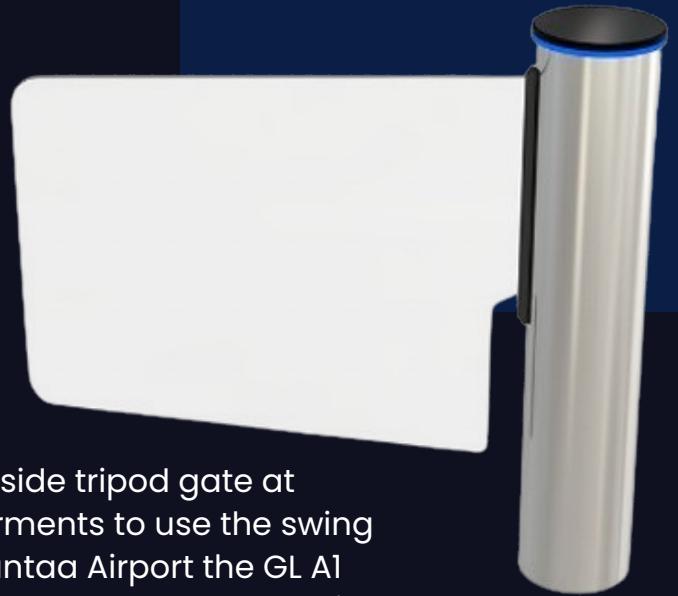
- ✓ Usage Location
- ✓ Operating Modes and Access Control
- ✓ Automatic reset
- ✓ Fast and reliable operation
- ✓ Operating and Emergency Situations
- ✓ Safety features

## Swing gates

# GL A1

The GL A1 Swing Gate offers an efficient and secure solution for indoor areas where unobstructed passage is required, such as for groups or deliveries.

The GL A1 swing gate is a popular model alongside tripod gate at gyms, allowing individuals with mobility impairments to use the swing gate while others use the tripod. At Helsinki-Vantaa Airport the GL A1 model is used for all the exit gates, which sums up to around 100 units.



## Technical Specification

**Frame Material:** Steel. White and dark metal color options

**Card Panel Material:** Tempered Glass

**Wing Material:** 304 Stainless Steel

**Dimensions:** 780-1130 mm (width) x 1020 mm (height) x 230 mm (depth)

**Weight:** Approximately 48 kg

**Passage Width:** 550-900 mm (wing length: 500-900 mm)

**Wing Opening Time:** 1.5-2 seconds

**Power Supply:** AC 220V/110V, 50/60Hz, 24V DC

**Power Consumption:** 2 W in standby, max. 30 W

**Operating Temperature:** -20 °C to 75 °C

**Operating Humidity:** 0 ~ 95% (non-condensing)

**Usage Environment:** Indoor / Outdoor (protection recommended)

**Flow Efficiency:** Up to 35 people/min

**LED Indicators:** RGB LED display indicating passage status

**Emergency Situation:** Wings open automatically when power is lost

**Communication & Control System:** Dry contact, relay signal, RS485

**Communication:** Compatible with all access control systems

**Optional Accessories:** Wireless remote control, manual control, counter (with or without reset), card reader mounting bracket, additional accessories such as photoelectric sensors, different exterior materials and colors

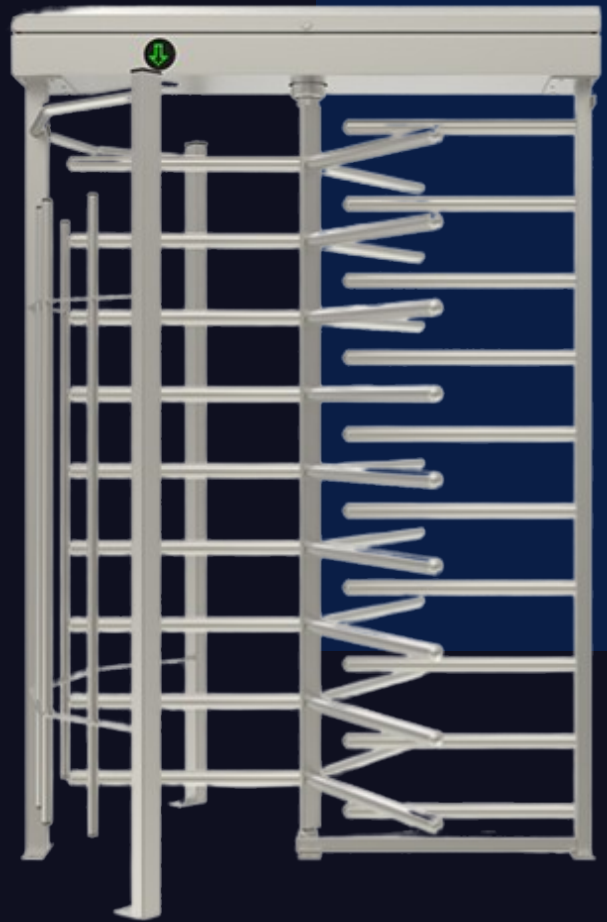
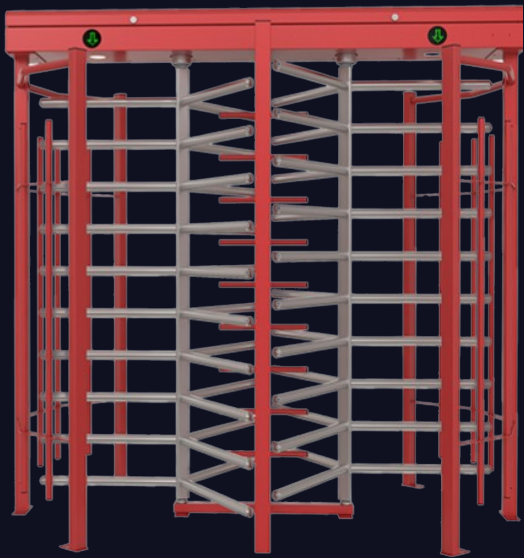
## Features

- ✓ Usage Environment
- ✓ Operational Reliability
- ✓ Traffic Direction and Indicators
- ✓ Easy Installation and Maintenance
- ✓ Emergency Situation
- ✓ Color and Material Options

Full-height turnstiles

# BTC-300

Affordable yet Robust Construction Site Gate. This is the most cost-effective option among full-height turnstiles. The BTC-300 ensures reliable functionality for unmanned gyms by effectively preventing unauthorized access. A popular model, especially in outdoor gyms.



## Features

- ✓ **Durable Construction:** The BTC-300 turnstile is made from AISI 304 stainless steel with an electrostatic powder-coated finish. Suitable for both indoor and outdoor environments.
- ✓ **Fast and Efficient Operation:** With a passage speed of approximately 30 people per minute, it ensures smooth entry and exit flow for customers.
- ✓ **Easy Integration:** The BTC-300 turnstile is compatible with all access control systems and can be easily integrated into a larger security and access management solution.
- ✓ **Modern and Stylish Design:** The gate can be customized in any RAL color.
- ✓ **Low Maintenance Needs:** The BTC-300 is designed for ease of use and maintenance, minimizing upkeep requirements and optimizing operational continuity.

# Technical Specification

**Application:** For indoor and outdoor use

**Operating Temperature and Humidity:** Operates between -20°C – +68°C (optimal -50°C with heater), humidity 95% without condensation.

**Usage Intensity:** 100% continuous operation, 24/7

**Dimensions (mm):** 1490 x 1257 x 2180

## Construction and Materials:

Three-part rotor (120°), with 10 rotatable arms on each section.

Available in different materials:

Galvanized steel (BTC 300, BTC 300-25),

Stainless steel (304/316)

Electrostatic powder-coated finish

Optional finish: Satin (for stainless steel).

## Operation:

Voltage: 110/220V AC 50/60 Hz ( $\pm 10\%$ ), 24V DC

Power consumption: ~8.1 W in standby, ~7.6 W during passage (varies depending on accessories)

## Operating Modes:

Entry-exit controlled

Entry-controlled, exit free

Entry free, exit controlled

One entry in both directions

**Adjustment Options:** All settings and operating modes are adjustable via the control board.

Manual capacity: Maximum 48 cycles/min, typically ~25 people/min

Motorized capacity: Maximum 40 cycles/min, typically ~20 people/min

**Fail Safe Function:** Allows for free passage in both directions in an emergency. Alternatively, a fail secure setting where passage can be blocked in a selected direction.

Weight: ~175 kg

## Optional Features and Accessories:

Electrically operated unit, wireless remote control (with transmitter-receiver), manual and emergency adjustment key

Compatible with all access control systems

Various color options and customization possibilities

Rainproof canopy, base plate, battery backup, RS232/RS485/TCP/IP modules

## Special Features:

Compatible with fire alarm systems

Compliant with UK H&S regulations ( $\leq 98$  mm gap between vertical bars)

Full-height turnstiles

# GT-10B

The GT-10B Wing Gate is a turnstile designed by Gatech Oy. This gate stands out from other models due to its structure with curved wings, and its rotating wings consist three big transparent plates.



## Technical Specification

**Dimensions:** Width 1500 mm, Height 2270 mm, Depth 1500 mm

**Material:** Electrostatic powder coating on hot-dip galvanized steel

**Operating Voltage:** 110/220V AC 50/60 Hz ( $\pm 10\%$ ), 24V DC

**Operating Temperature:**  $-20^{\circ}\text{C}$  -  $+68^{\circ}\text{C}$  (alternatively  $-50^{\circ}\text{C}$  with additional heating), RH 95% in a non-condensing environment

**Capacity:** Nominal flow rate ~20 people/min

## Features

- ✓ **Operating Environment:** Indoor
- ✓ **Power Supply:** 110/220V AC 50/60 Hz ( $\pm 10\%$ ), 24V DC
- ✓ **Wings:** Tempered glass, curved wings
- ✓ **Frame:** 304 stainless steel (316 option), satin finish

Full-height turnstiles

# GT-10A

GT-10A is a full-height turnstile designed by Gatech Oy. Its modern design, featuring curved plexiglass wings and a durable structure, offers both aesthetic and practical architecture. This turnstile is an ideal choice for gyms that are unmanned at least partially and want to reliably prevent tailgating.



## Technical Specification

**Dimensions:** Width: 1500 mm, Height: 2270 mm, Depth: 1500 mm

**Material:** Electrostatic powder coating on hot-dip galvanized steel

**Power Supply:** 110/220V AC 50/60 Hz ( $\pm 10\%$ ), 24V DC

**Operating Temperature:**  $-20^{\circ}\text{C}$  to  $+68^{\circ}\text{C}$  (optionally  $-50^{\circ}\text{C}$  with additional heater), RH 95% in a non-condensing environment

**Capacity:** Nominal flow rate: ~20 people/min

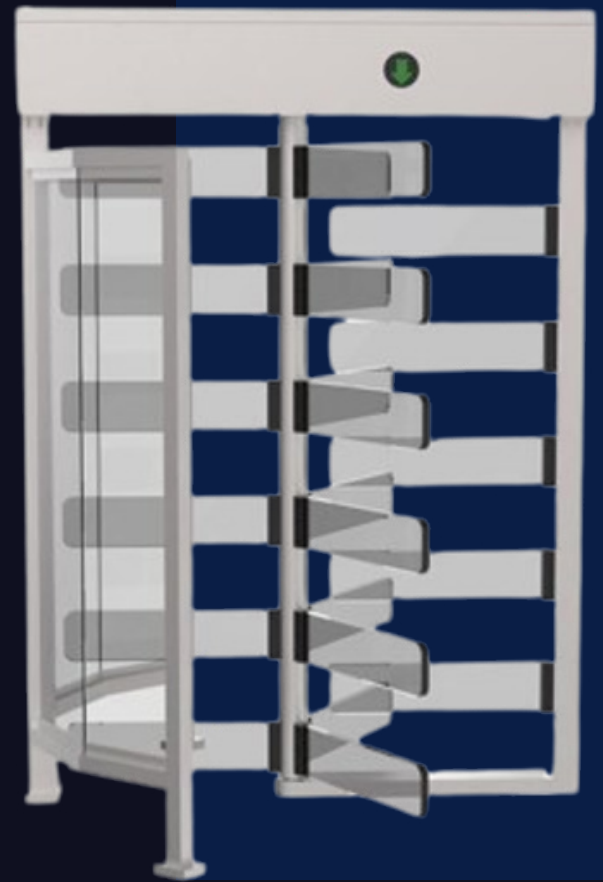
## Features

- ✓ **Durable Construction**
- ✓ **Curved Plexiglass Wings**
- ✓ **Easy Compatibility**
- ✓ **Safety Features**

## Full-height turnstiles

# GT-5

The GT-5 is a full-height turnstile designed by Gatech Oy, known for its proven durability. Its modern design, combining glass wings and Plexiglas shields, makes it both functional and visually appealing. This gate is an excellent choice for unmanned gyms as it effectively prevents access to unauthorized individuals.



### Technical Specification

**Dimensions:** Width 1630 mm, Height 2310 mm, Depth 1500 mm

**Material:** Electrostatic powder coating on hot-dip galvanized steel, with acrylic wings.

**Operating Voltage:** 110/220V AC 50/60 Hz ( $\pm 10\%$ ), 24V DC

**Operating Temperature:**  $-20^{\circ}\text{C}$  to  $+68^{\circ}\text{C}$  (alternatively  $-50^{\circ}\text{C}$  with additional heater), RH 95% in a non-condensing environment.

**Capacity:** Nominal flow rate  $\sim 20$  people/min, ensuring smooth and efficient access for gym members.



### Features

- ✓ **Durable Construction**
- ✓ **Seamless Integration**
- ✓ **Customizable Colors**
- ✓ **Safety Features**

RFID tags

# Mifare 1K Classic

Mifare 1k Classic tags offer a reliable and cost-effective solution for access control and other RFID-based identification. This is by far the most commonly used chip type in gyms (over 90%).

The Mifare 1k Classic product was originally manufactured by NXP, but today there are many alternative manufacturers for the same product.

Gatech offers Classic products in the form of cards, key fobs, and wristbands. We can print and number them according to your specifications. We are able to supply even in small quantities across the entire European region (including the UK, Norway, and Switzerland), and in larger quantities anywhere in the world.



## Technical Specification

**Memory:** 1KB (kilobyte)

**Frequency:** 13.56 MHz

**Applications:** Access control, parking systems, ticketing, and entry systems

**Reading Distance:** 3–10 cm (depending on the reader and tag type)

**Material:** Durable plastic (cards and key fobs) or silicone (wristbands), suitable for everyday use

**Colors:** Available in all colors

**Temperature Range:** Operates well in a wide temperature range (–25°C to +70°C)

**Certifications:** ISO 14443A

**Important NOTE!:** Mifare 1K Classic tags are available in both 4-byte and 7-byte versions. This is crucial to check before purchasing tags, as tags with the wrong byte length may not work in your system. Gatech experts can assist in determining the correct byte length.



## Features

- ✓ **1KB Memory:** Sufficient storage space for access control and other data management. If you want to integrate facial recognition with your tag (access ID), make sure to consult with an expert to confirm whether the memory is sufficient in this case.
- ✓ **High Compatibility:** Compatible with almost all access control systems, except those that use proprietary encryption keys for tags. Gatech can assist in determining whether the tags your access control system is accepting are encrypted or not.
- ✓ **Easy Implementation:** Mifare 1k Classic tags can be quickly programmed and integrated into existing systems.
- ✓ **Durable Construction:** The tags supplied by Gatech have been tested by several security companies and gym chains. The quality and durability have received significant praise.
- ✓ **Protection Level:** Mifare Classic 1K tags are low-protection tags, meaning they are very easy to copy. However, this may not necessarily pose a significant issue. You can ask Gatech staff for more information regarding copying concerns.

# PREMIUM 4D Massage Chair

## Premium 4D Massage Chair – Top-Level Relaxation and Full-Body Care

The Premium 4D is a state-of-the-art massage chair that brings a completely new relaxation experience to gyms or wellness centers. Innovative robotic technology combined with numerous customizable massage functions ensures a perfect wellness experience for all clients. This chair is specifically designed to address the individual needs of the body, offering a massage that adjusts precisely to body shapes and pressure points.

## Technical Specification

Model: Premium 4D

Power Supply: 220V~

Frequency: 50Hz

Power Consumption: 120W

Dimensions: 160 x 77 x 118 cm

Weight: 82kg

Standard Compliance: IEC 60335-2-32 / IEC 60335-1

Protection Class: Class I

## Features

- ✓ **Bluetooth Audio**
- ✓ **Electric and Manually Adjustable**
- ✓ **Zero Gravity Relaxation Position**
- ✓ **Ergonomic and Stylish Design**
- ✓ **Air Compression Massage**
- ✓ **Infrared Heat Therapy**
- ✓ **Adaptable Footrest & Foot Massage**



# TCN Classic Vending Machine

## GT Vending – Smart and User-Friendly Vending Machine for Gyms

GT Vending is a state-of-the-art vending machine specifically designed for gyms. This smart vending machine offers customers and members a quick and convenient way to purchase drinks, snacks, and other essential products even outside of reception hours. Additionally it is a great way for the gym owner to earn some extra money during the hours that reception is closed.



## Technical Specification

Product Type: Snack and drink vending machine

External Dimensions:

Height: 1940 mm

Width: 1269 mm

Depth: 795 mm

Product Selection: Max. approx. 60 different products

Weight: 280 kg

Cooling Temperature: 4–25 °C (adjustable)

Power Supply: 100V/240V, 50Hz/60Hz

Payment System: Bills, cards, coin mechanism (MDB Protocol)

Standard Interfaces: MDB/DEX2

## Features

- ✓ Smart Product Management
- ✓ Versatile Payment Options
- ✓ Energy Efficiency
- ✓ Durable and Low-Maintenance
- ✓ Customizable Product Selection
- ✓ Remote Control

## Contact Us

Gatech - PS Enterprise Oy 3395168-9

Email: [sales@gatech.fi](mailto:sales@gatech.fi)

Phone number: +358 40 6206964

# GATECH